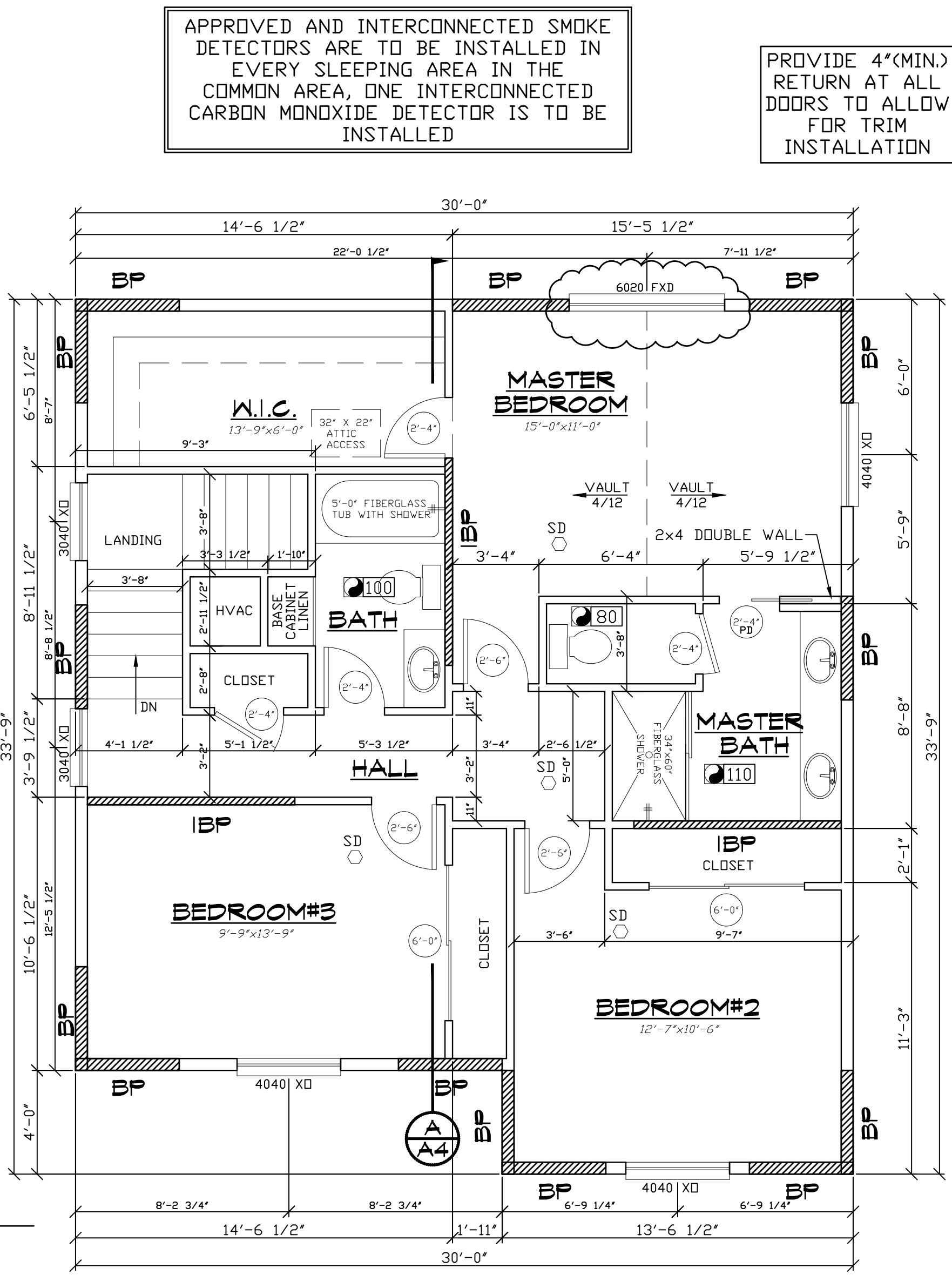
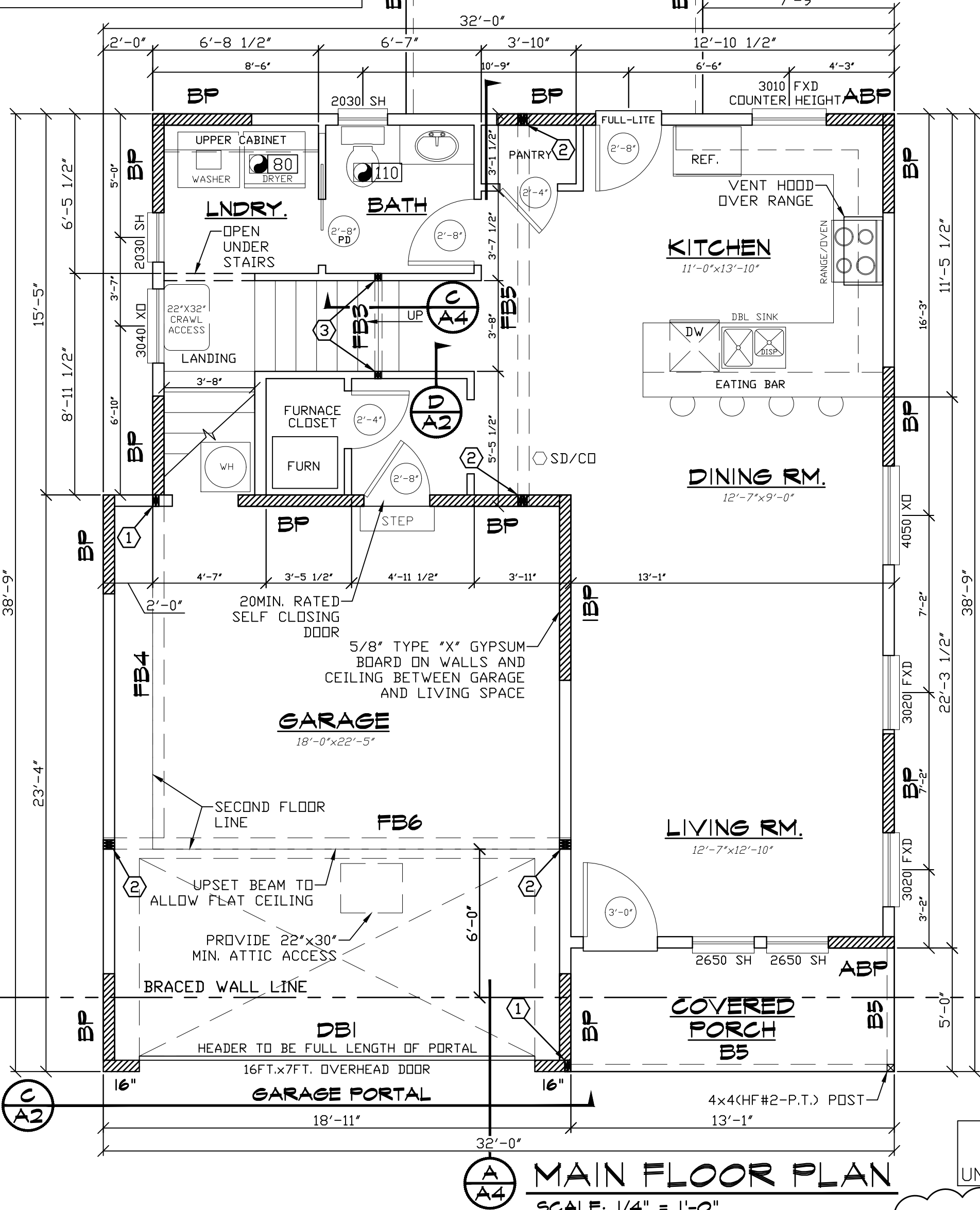




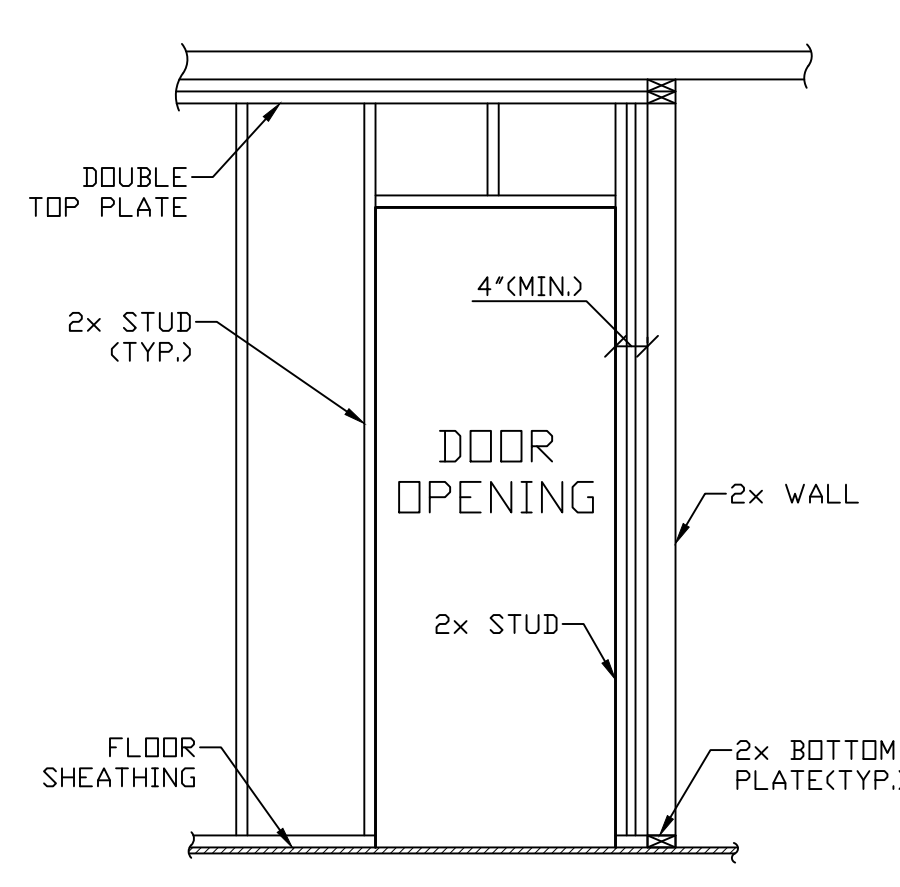
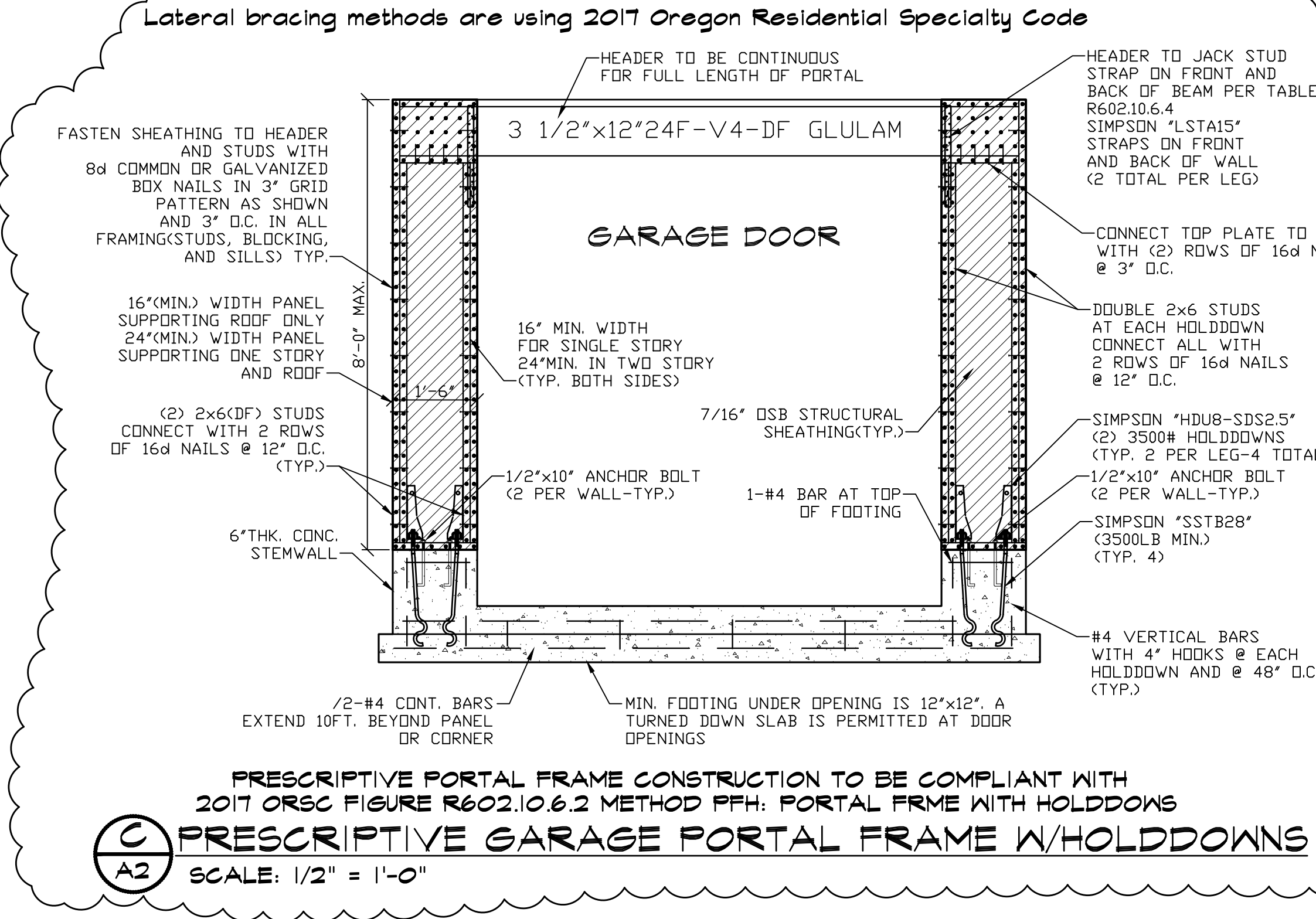
**AREAS:**  
 FIRST FLOOR - 698 SQ. FT.  
 SECOND FLOOR - 893 SQ. FT.  
 LIVING AREA - 1,591 SQ. FT.  
 GARAGE - 446 SQ. FT.  
 TOTAL - 2,037 SQ. FT.



**CONSTRUCTION SCHEDULE**  
 BP (Brace Panel)  
 IBP (Interior Brace Panel)

- \* 4' minimum length
- \* Meet code for size and spacing of studs.
- \* Sill plate anchorage as follows: Pressure treated 2X with 1/2" Dia x 10" AB within 6" each end and on 48" centers.
- \* Sole plate anchorage as follows: 2X plate fastened with 3-16d common nails at 16" centers max.
- \* Sheathing as follows: 7/16" OSB APA rated sheathing with 2X normal blocking at all joints. Use 8d common nails or 8d galvanized box nails. Place fasteners at 4" centers on edges and 6" centers in field.

- \* 8' Minimum length
- \* 4' Minimum length for sheathing on both sides.
- \* Meet code for size and spacing of studs.
- \* Sill plate anchorage as follows: Pressure treated 2X with 1/2" Dia x 10" AB within 6" each end and on 48" centers.
- \* Sole plate anchorage as follows: 2X plate fastened with 3-16d common nails at 16" centers max. Provide double joists under parallel walls and blocking under perpendicular walls.
- \* Sheathing as follows: 1/2" Gypsum applied to one side of wall with 2X normal blocking at all joints. Use 1 1/4" drywall nails or screws at 6". Place fasteners at 6" centers on edges and 12" centers in field.



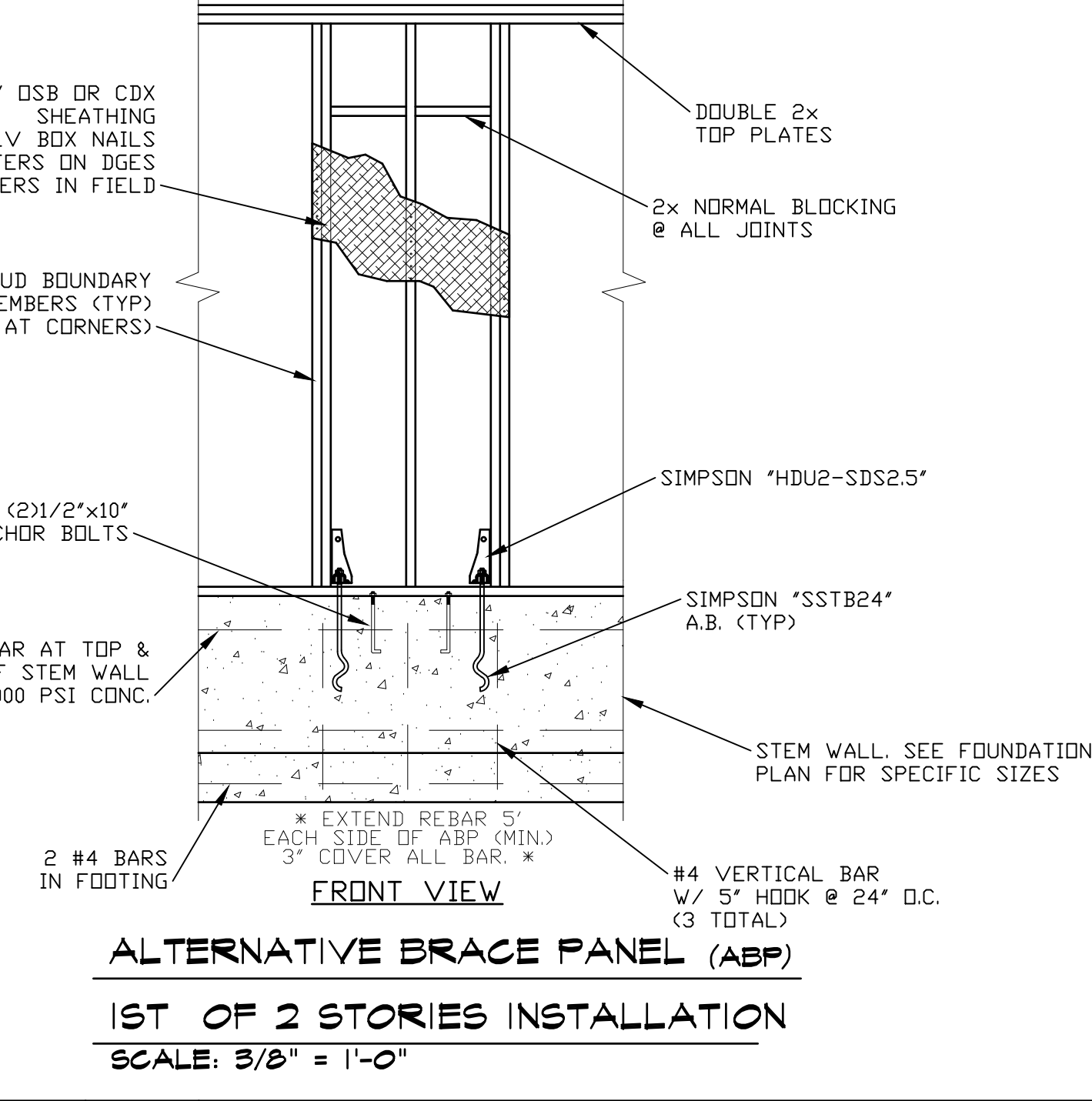
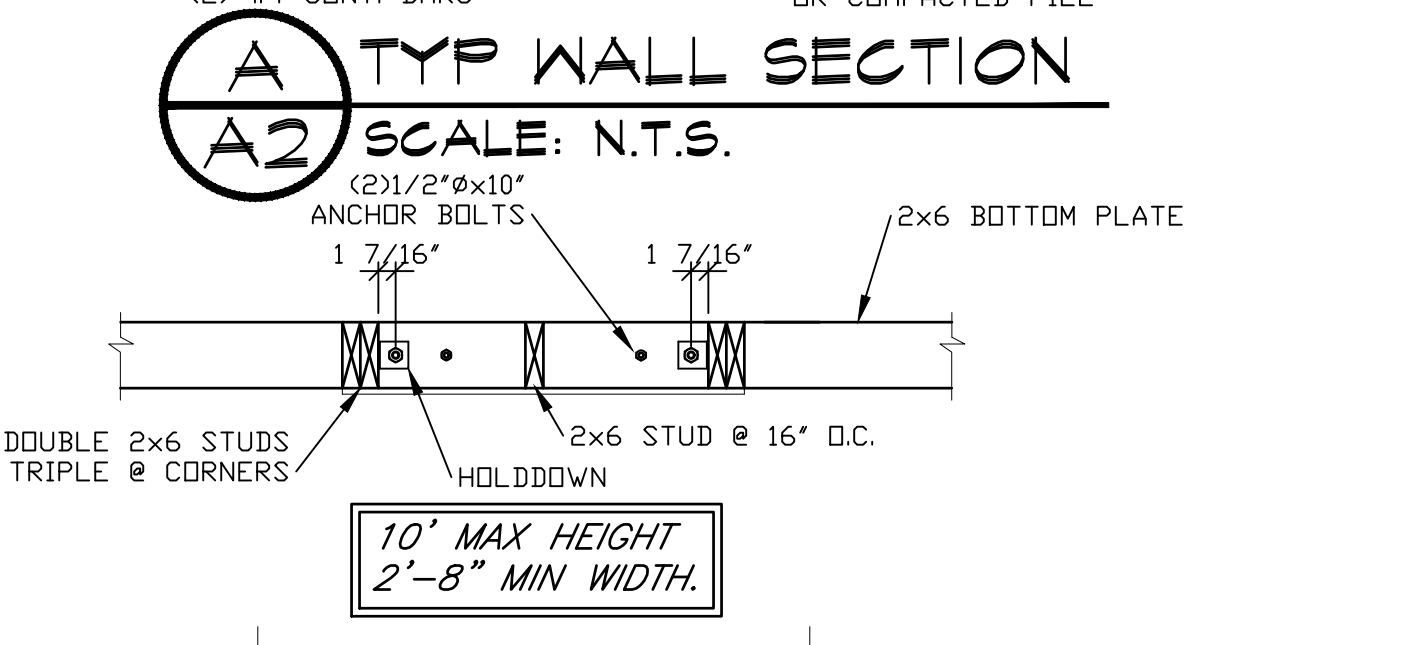
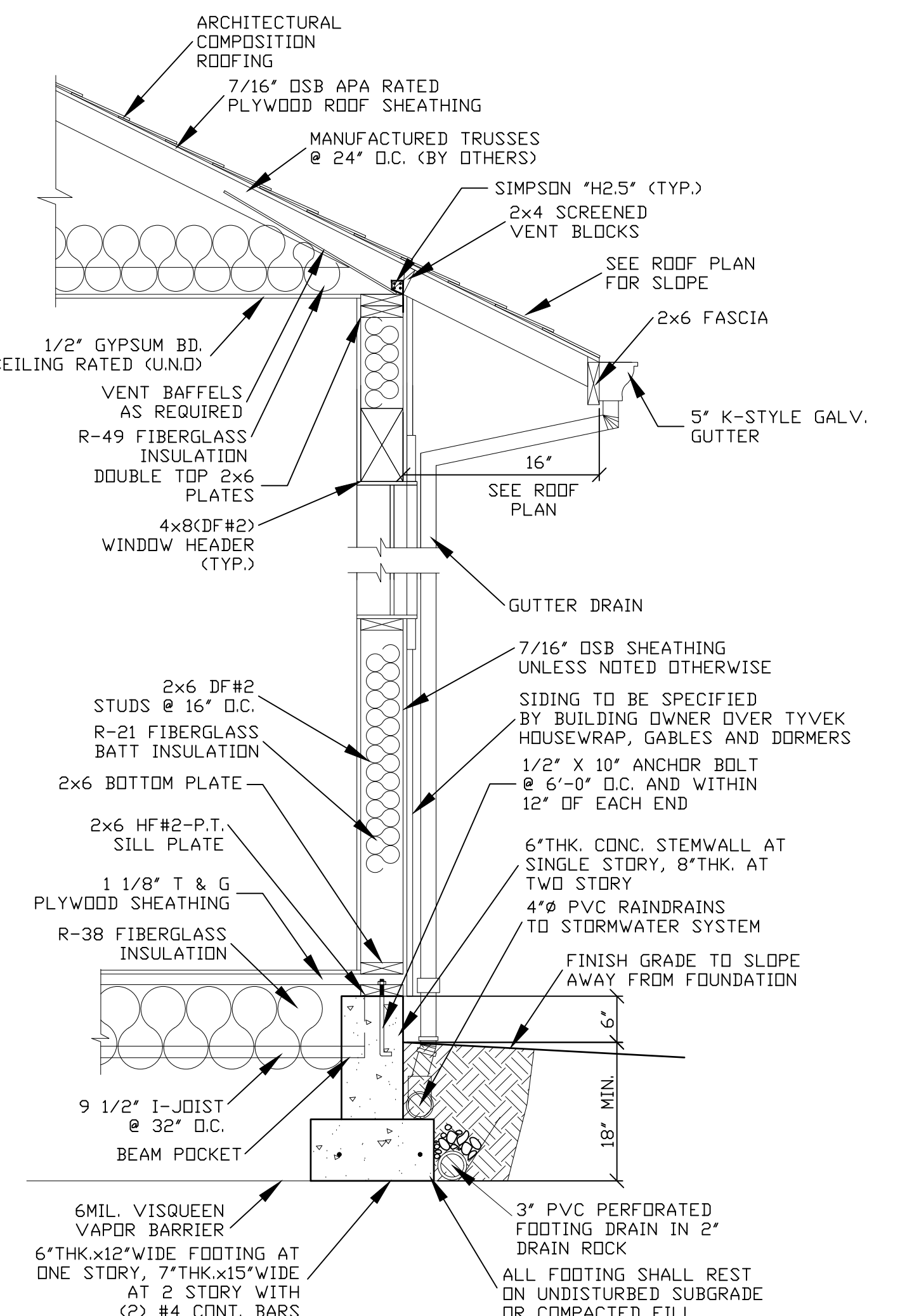
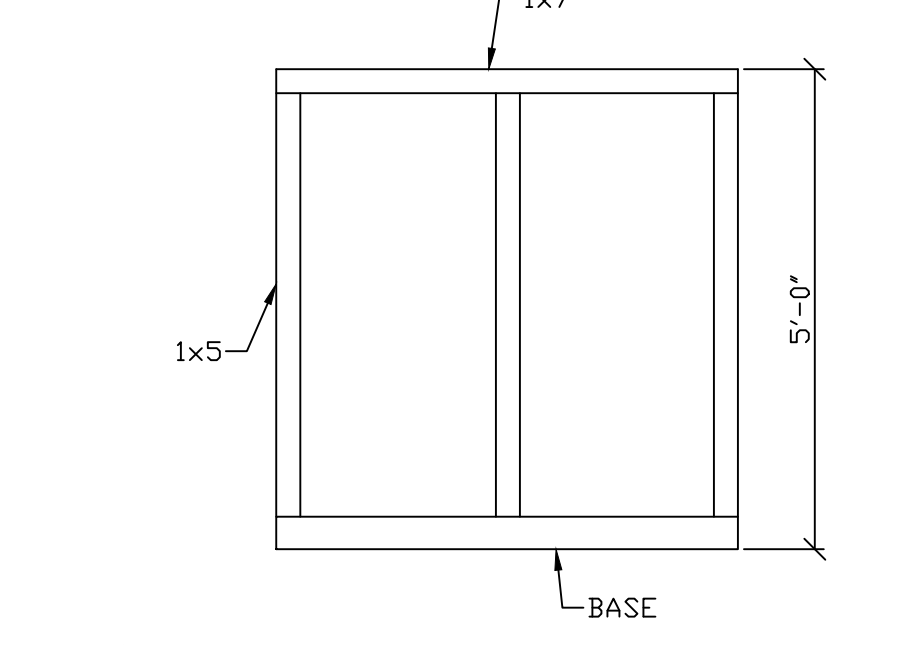
**NOTES:**

- (2) 2x6(DF) STUDS, CONNECT WITH 2 ROWS 16d NAILS @ 12" O.C.
- (3) 2x6(CF) STUDS, CONNECT WITH 2 ROWS 16d NAILS @ 12" O.C.
- (2) 2x4(CF) STUDS, CONNECT WITH 2 ROWS 16d NAILS @ 12" O.C.

**BEAM SCHEDULE**

R1 1 1/2"x11 7/8" 1.3E LVL RIM  
 DB1 3 1/2"x12" 24F-V4 1.8E DF  
 FB3 1 3/4"x11 7/8" 2.0E RIGIDLAM LVL  
 FB4 3 1/2"x12" 24F-V4 1.8E DF  
 FB5 6 3/4"x12" 24F-V4 1.8E DF  
 FB6 5 1/2"x15" 24F-V4 1.8E DF  
 FB7 1 3/4"x11 7/8" 2.0E RIGIDLAM LVL  
 FB8 1 3/4"x11 7/8" RFP1 20  
 FB9 1 3/4"x11 7/8" RFP1 20  
 B5 4x8(DF#2)  
 B6 4x8(DF#2)

SD INTERCONNECTED SMOKE DETECTOR  
 SD/CO INTERCONNECTED COMBINATION SMOKE AND CARBON MONOXIDE DETECTOR  
 50 VENTILATION FAN - CFM NOTED



REV.	DATE	BY	DESCRIPTION
1	12-30-19	MCF	CHANGED MASTER BEDROOM REAR WINDOWS FROM (3) 2020 FXD TO (1) 6020 FXD AND UPDATED GARAGE PORTAL FRAME DETAIL

**PRECISION DESIGN**  
 MATT FANGCETT  
 7 PARKVIEW CIRCLE  
 BELLINGHAM, WA 98229  
 503-569-2338

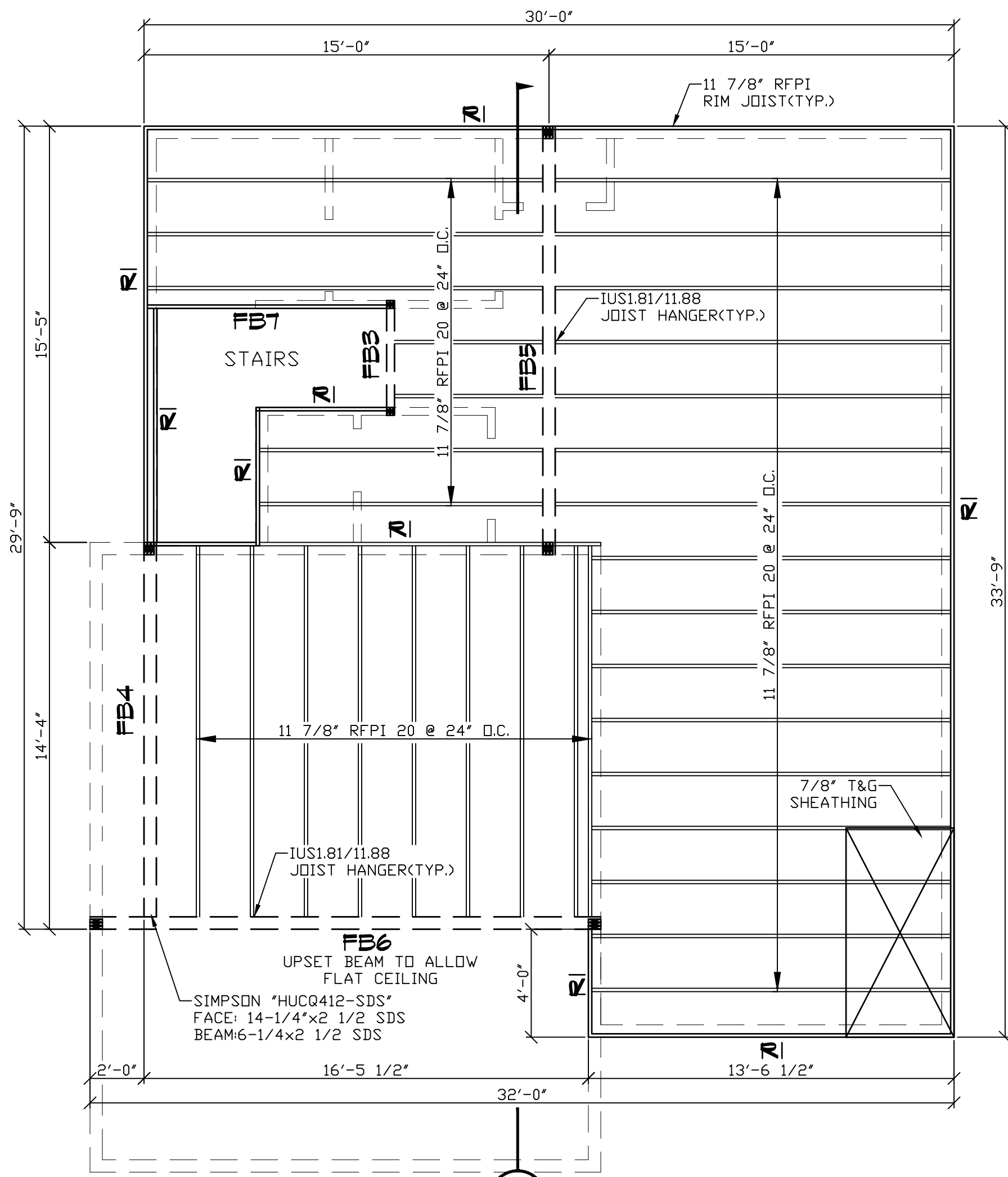
**FLOOR PLANS, SECTION AND NOTES**

**STEVE BENNETT CONSTRUCTION, LLC**  
 CCB#175467  
 APPLIGATE CROSSING

**PLAN 3A**  
 1ST OF 2 STORIES INSTALLATION  
 SCALE: 3/8" = 1'-0"

DESIGNED BY: MCF  
 DRAWN BY: MCF  
 DATE: 10-21-19  
 FILE NAME: PLAN 232-1591  
 DRAWING NO. REV.

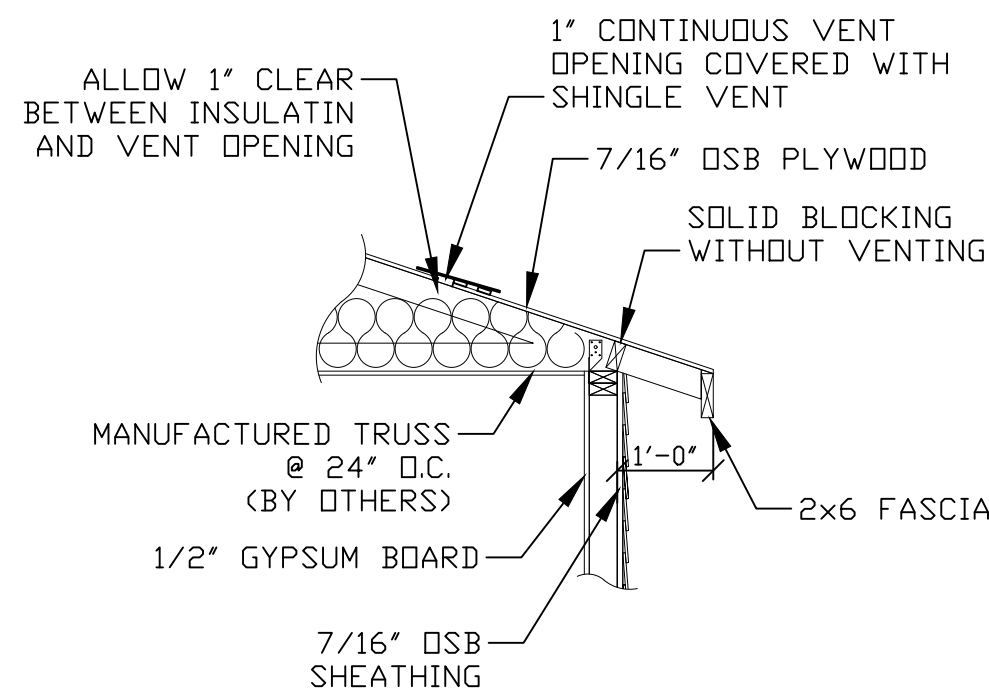




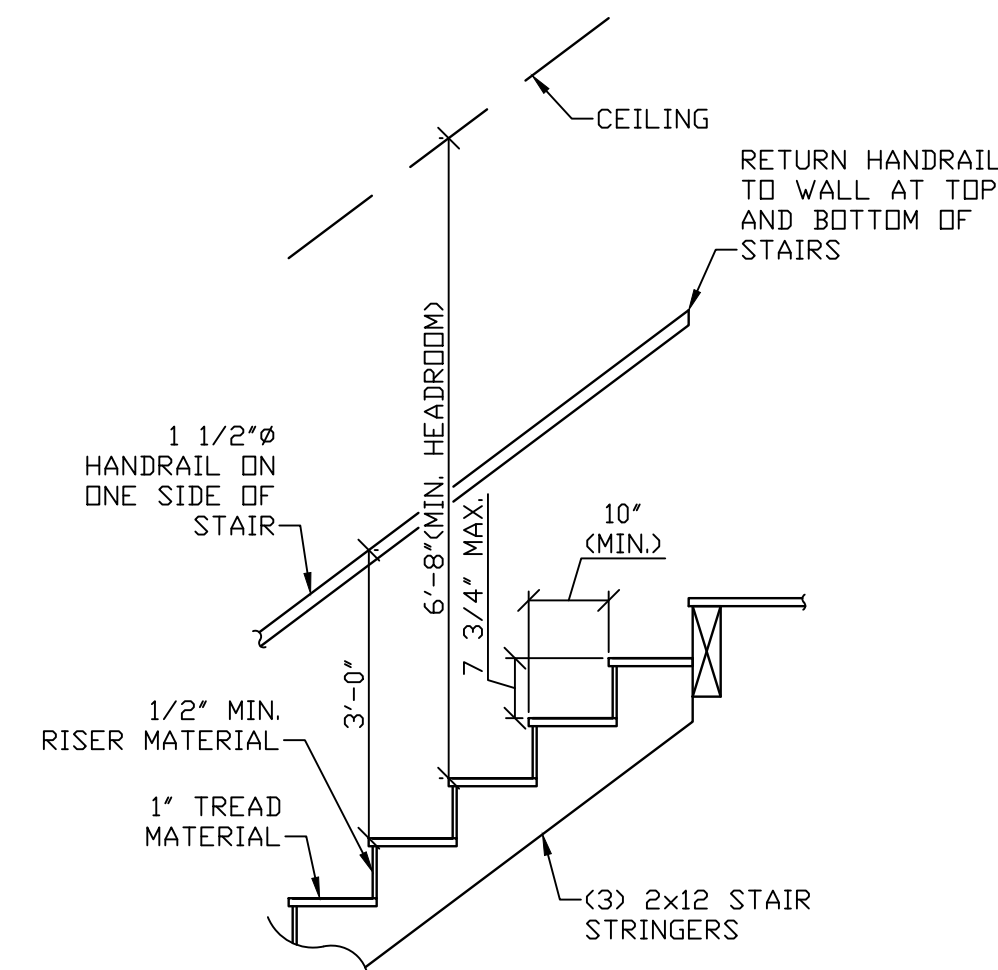
**SECOND FLOOR JOIST LAYOUT**  
SCALE: 1/4" = 1'-0"

**BEAM SCHEDULE**

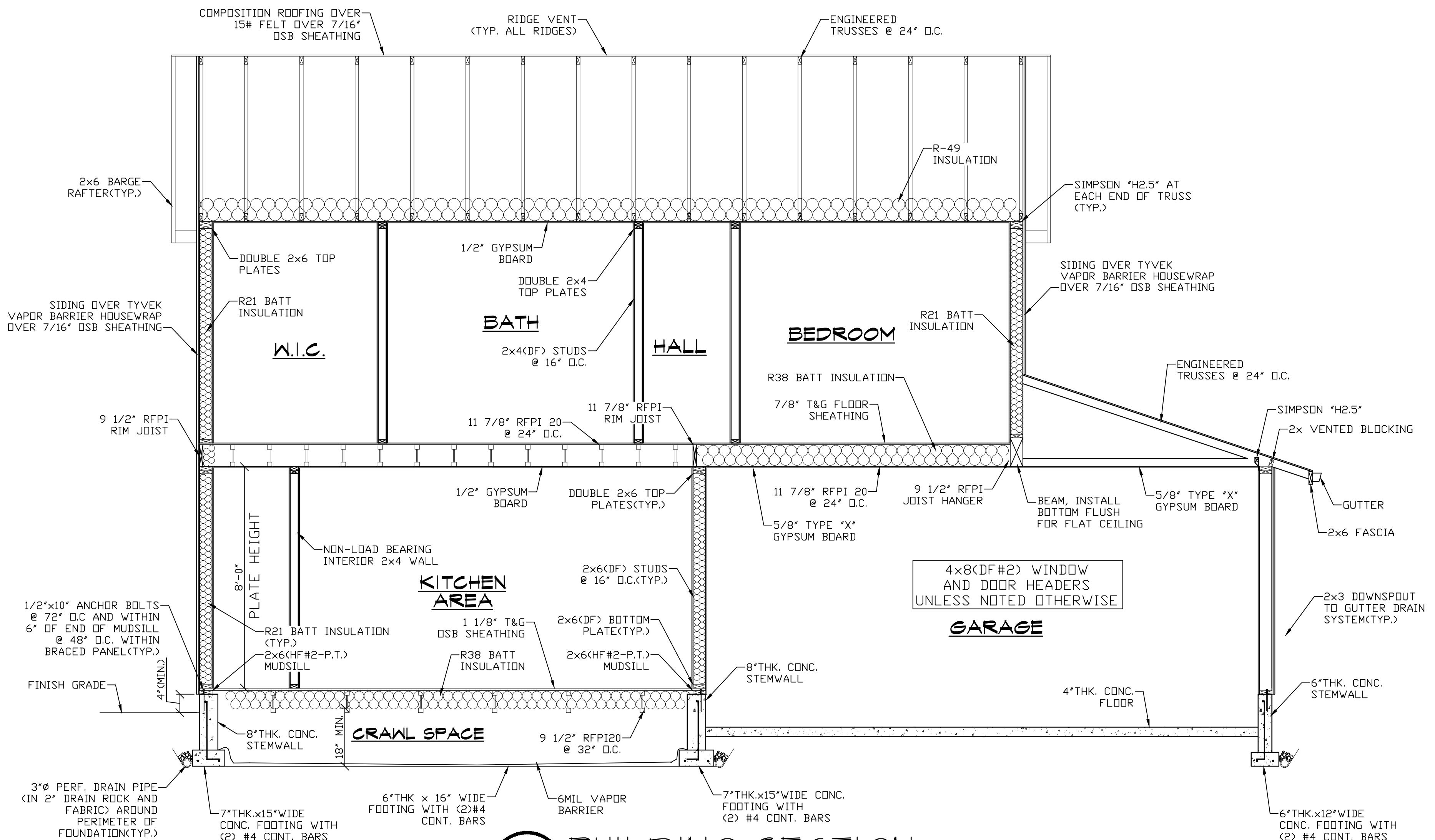
- R1 1 1/2"x11 7/8" 1.3E LVL RIM
- DB1 3 1/2"x12" 24F-V4 1.8E DF
- FB3 1 3/4"x11 7/8" 2.0E RIGIDLAM LVL
- FB4 3 1/2"x12" 24F-V4 1.8E DF
- FB5 6 3/4"x12" 24F-V4 1.8E DF
- FB6 5 1/2"x15" 24F-V4 1.8E DF
- FB7 1 3/4"x11 7/8" 2.0E RIGIDLAM LVL
- FB8 1 3/4"x11 7/8" RFPI 20
- FB9 1 3/4"x11 7/8" RFPI 20
- B5 4x8(DF#2)
- B6 4x8(DF#2)



**B PROTECTED EAVES**  
SCALE: 1/2" = 1'-0"



**C STAIR DETAIL**  
SCALE: 1/2" = 1'-0"



**A BUILDING SECTION**  
SCALE: 3/8" = 1'-0"

**PRECISION DESIGN**  
MATT FANGETT  
7 PARKVIEW CIRCLE  
BELLINGHAM, WA 98229  
503-569-2338

**ROOF PLAN AND BUILDING SECTION**

**STEVE BENNETT CONSTRUCTION, LLC**  
CCB#175467  
APPLIGATE CROSSING

**PLAN 3A**  
DESIGNED BY: MCF  
DRAWN BY: MCF  
DATE: 10-21-19  
FILE NAME: PLAN 232-1591  
DRAWING NO. REV.

